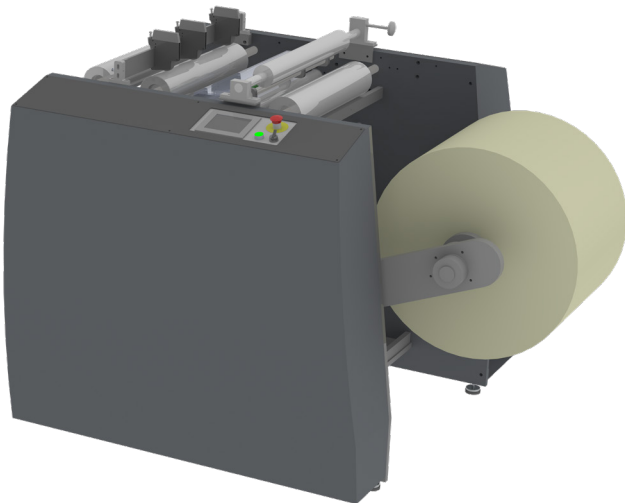


# LRW500

## Rewind Unit



For the heaviest and most demanding jobs, GM offers this multi-purpose, stand-alone rewinding unit with splice table, web guide and slitting knife. Precise torque control ensures the optimal winding quality.

The entire module is electronically synchronized and capable of communicating with a variety of printing systems. Specific interfaces are available for Xeikon, HP Indigo and Epson. A universal web tension interface can be used as well. The machine will synchronize to the speed from the press with a dancer arm/tension break that also gives the possibility to adjust the web tension between the press and the **LRW500**. A colour touch screen interface with graphic symbols instead of text simplifies operation and makes the module very user-friendly.

#### THE LRW500 FEATURES:

- Roll pick-up from floor.
- Step less electronic tension setting.
- Easy to use graphic touch screen.
- Air expanding mandrels.
- Low unwind warning signal.
- Supports multiple substrates: Paper, Cardboard, transparent PET.
- Hydraulic lifting arms support heavy rolls.

#### OPTIONS:

- Optional knife station with either razorblade slitting or crush knife slitting.
- Web guide.
- Antistatic system.
- Dual rewind on single shaft web guide.
- Slack loop interface.
- Corona unit.

SPECIFICATIONS	METRIC	IMPERIAL
Web width	250 - 520 mm	9.8 - 20.5"
Substrate support	40 - 350 gsm paper and film	
Max. roll diameter	1000 mm	39.4"
Max. roll weight	750 kg	1653 lbs
Core diameter	76 or 152 mm	3 or 6"
Max. speed	30 m/min	98 ft/min

*Higher speed on request*